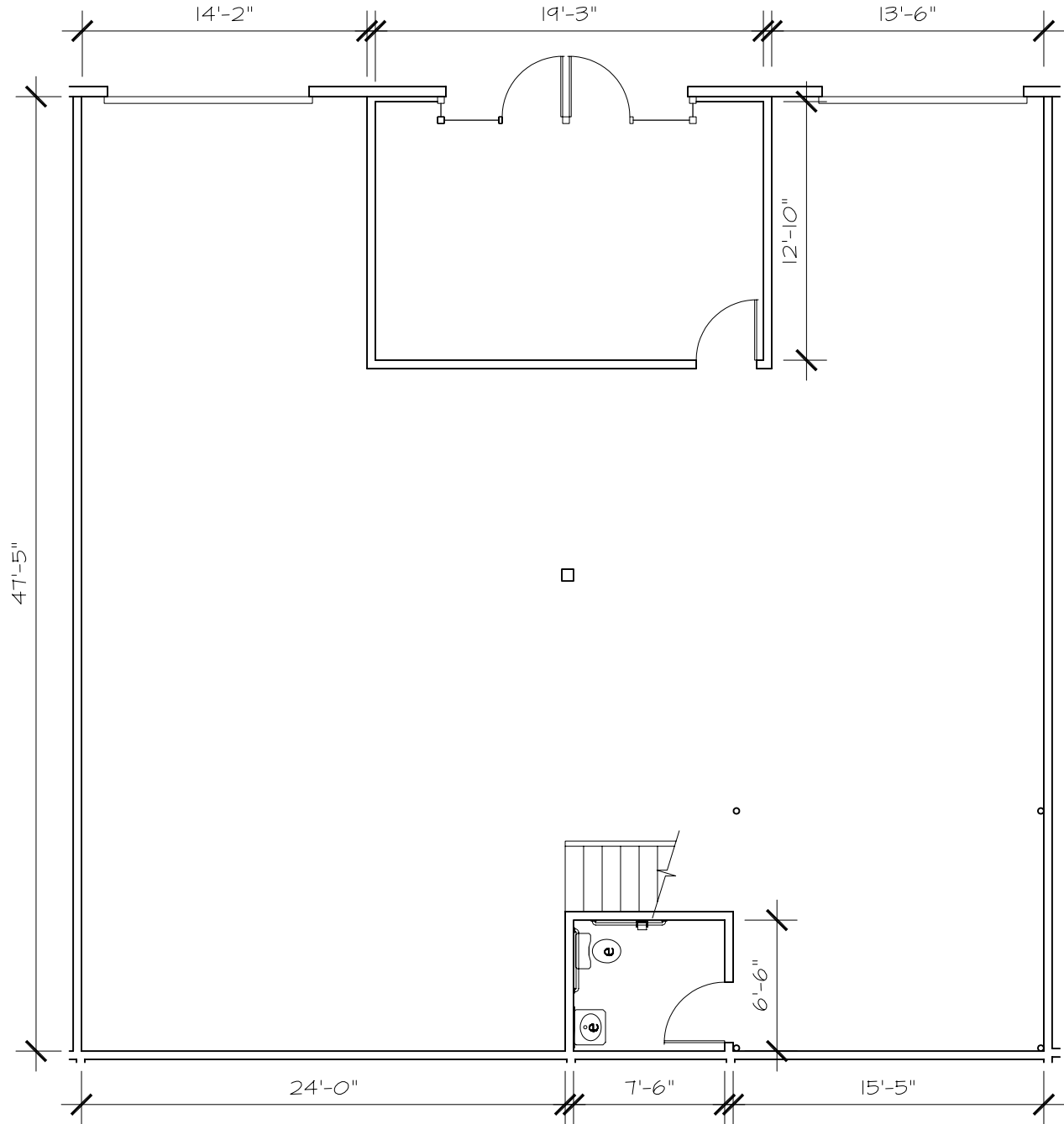


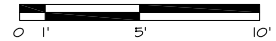
PRELIMINARY



SPECIFICATIONS:

15' CLEAR HEIGHT IN WAREHOUSE
 100 AMP 3PH. 120/208 VOLT POWER

BUILDING CONTAINS SPRINKLERS
 2 GRADE LEVEL LOADING DOOR



BUILDING 1545-UNIT G & F
 TIDELANDS INDUSTRIAL PARK

NATIONAL CITY, CA

UNIT G & F

OFFICE/ RR	292 U.S.F.
WAREHOUSE	2,024 U.S.F.
TOTAL	2,316 U.S.F.



1/8"=1'-0"
 9/08/2006